




SPORTS EQUIPMENT CATALOGUE

 **SYNSPORT**

WWW.SYNSPORT.CO.ZA

WHO WE ARE










-  ORIGINAL SYNTHETIC SPORTS COMPANY FOUNDED IN 1994.
-  APPROACHING 150 FULL SIZE SYNTHETIC SPORTS FIELDS BUILT AROUND SOUTH AFRICA
-  BRANCHES IN CAPE TOWN, KNYSNA AND JOHANNESBURG WITH AN ABILITY TO SERVICE A LARGE PART OF THE COUNTRY.
-  OVER 2 MILLION SQUARE METERS OF SPORTS SURFACING INSTALLED TO DATE.
-  WE OFFER A TURN-KEY SOLUTION AND HANDLE THE FULL SCOPE OF WORK IN HOUSE FROM BASE WORKS, SURFACING, FENCING AND SPORTS EQUIPMENT.
-  IN-HOUSE STEEL ENGINEERING DEPARTMENT CAPABLE OF MAKING ANY SPORTING ITEM NEEDED TO COMPLETE THE FACILITY.
-  OUR PRODUCTS ARE APPROVED BY THE RELEVANT SPORTING BODIES LIKE FIFA, WORLD RUGBY, FIH AND ITF.
-  WE HAVE BUILT FACILITIES FOR SOME OF THE TOP SCHOOLS AND UNIVERSITIES AROUND THE COUNTRY AND CONTINUE TO FURTHER OUR RELATIONSHIPS WITH THESE CLIENTS THROUGH OUR DEDICATED COMMITMENT TO QUALITY.
-  WE CONSULT, CONSTRUCT, INSTALL, TEST AND MAINTAIN PERFORMANCE SPORT SURFACES.

TABLE OF CONTENTS

PAGE 1 - ATHLETICS & BASKETBALL EQUIPMENT

PAGE 2 - BADMINTON & CRICKET EQUIPMENT

PAGE 3 - FOOTBALL EQUIPMENT

PAGE 4 - HOCKEY EQUIPMENT

PAGE 5- NETBALL & TENNIS EQUIPMENT

PAGE 6 - RUGBY & VOLLEYBALL EQUIPMENT

PAGE 7 - SPECTATOR SEATING & GENERAL EQUIPMENT

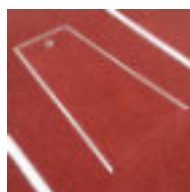
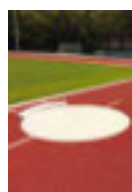
PAGE 8 - TERMS & CONDITIONS

PAGE 8 - CONTACT DETAILS

ATHLETICS & BASKETBALL EQUIPMENT

ATHLETICS EQUIPMENT

ITEM CODE	ITEM	PRICE	DESCRIPTION
SE - ATH 001	ATHLETICS TAKE OFF BOARD & TRAY	R11 500,00	IAAF DIMENSIONS, 2MM MILD STEEL. HOT DIP GALVANIZED. COMPLETE WITH FIXING BOLTS AND LIFTING HANDLES ON TARTAN COVERED LID. INCLUDES SOLID TIMBER UNIT PAINTED WHITE COMPLETE WITH MERANTI INSERT.
SE - ATH 002	BASIC TAKE OFF BOARD ONLY	R3 100,00	IAAF DIMENSIONS. SOLID TIMBER UNIT PAINTED WHITE WITH BLACK PAINTED LINE.
SE - ATH 003	HURDLE - BASIC	R550,00	IAAF DIMENSIONS, ADJUSTABLE FOR JUNIOR TO SENIOR HEIGHT. 2MM MILD STEEL, HOT DIP GALVANIZED. COMPLETE WITH PAINTED PVC COMPOSITE SHEET CROSS BAR
SE - ATH 004	STEEPLE CHASE WATERJUMP HURDLE	R12 500,00	GALVANIZED STEEL, LAMINATED TIMBER BEAM WITH 2K AUTOMATIVE PAINT. ADJUSTABLE IN HEIGHT AND 3,66M LENGTH.
SE - ATH 005	STEEPLECHASE HURDLES - SET OF 4 (GIMTRAC)	R49 500,00	GALVANIZED STEEL, LAMINATED TIMBER BEAMS FINISHED WITH 2K AUTOMATIVE PAINT.
SE - ATH 006	SHOTPUT RING	R3 750,00	IAAF DIMENSIONS, 2MM TO 3MM MILD STEEL. HOT DIP GALVANIZED. TO BE SET IN CONCRETE 3MM THICK.
SE - ATH 007	SHOTPUT STOP BOARD	PRICE ON ENQUIRY	TREATED PINE TIMBER PAINTED TO GLOSSY WHITE FINISH.
SE - ATH 008	POLE VAULT BOX & LID	R6 560,00	IAAF DIMENSIONS, 2MM MILD STEEL. HOT DIP GALVANIZED. COMPLETE WITH SLEEVES AND COVER PLATES FOR CONCRETING.
SE - ATH 009	HAMMER THROW/DISCUS CAGE	PRICE ON ENQUIRY	IAAF DIMENSIONS, 10M HEIGHT. 2MM TO 8MM MILD STEEL, HOT DIP GALVANIZED, COMPLETE WITH NETTING. DESIGNED BY SYNSPORT ENGINEER STRUCTURE SIGNED OFF TO HANDLE WIND FORCE LOADS. TO BE INSTALLED BY SYNSPORT ONLY.
SE - ATH 010	HAMMER THROW/DISCUS CAGE BASIC	R54 500,00	ENCOMPASING CAGE TO SUITABLE DIMENSIONS, 5M HEIGHT. 2MM TO 3MM MILD STEEL, HOT DIP GALVANIZED, COMPLETE WITH NETTING. TO BE INSTALLED BY SYNSPORT ONLY.



BASKETBALL EQUIPMENT

ITEM CODE	ITEM	PRICE	DESCRIPTION
SE - BAS 001	STANDARD IN GROUND SET (PER SET)	R17 000,00	IN GROUND UNIT TO BE SET IN CONCRETE FOOTING. 2MM HOT DIPPED GALVANIZED STEEL STANDARD GREEN PAINT WITH DIFFERENT COLOUR OPTIONS AVAILABLE. OVERHANG 600MM - 1,2 M BACK BOARDS 1,2M X 900MM/1,8M X 1,05M.
SE - BAS 003	WALL MOUNTED UNIT (PER SET)	R15 000,00	FOLDABLE WALL MOUNTED UNIT. 2MM HOT DIPPED GALVANIZED STEEL, STANDARD GREEN PAINT WITH DIFFERENT COLOUR OPTIONS AVAILABLE. 1,2M OVERHANG OVERHANG 600MM - 1,2 M BACK BOARDS 1,2M X 900MM/1,8M X 1,05M.
SE - BAS004	FREE-STANDING COMPETITION SPEC BASKETBALL HOOP WITH 1.2M OVERHANG (PER SET)	R99 500,00	MOBILE FOLDING UNIT WITH UNIQUE HYDRAULIC LIFTING SYSTEM. 1.2M OVERHANG. POWDER COATED. INCLUDES BACK BOARD & HOOP.



BADMINGTON & CRICKET EQUIPMENT

BADMINGTON EQUIPMENT

ITEM CODE	ITEM	PRICE	DESCRIPTION
SE - BAD 001	STANDARD SELF STANDING/SLEEVE UNIT	R4 763,40	FREE-STANDING WITH INTEGRATED WEIGHT SYSTEM. STANDARD NET. 2MM MILD STEEL, HOT DIPPED GALVANIZED, STANDARD BLACK PAINT WITH DIFFERENT COLOUR OPTIONS AVAILABLE
SE - BAD 002	SLEEVE CAP	R200,00	SLEEVE CAP FOR COVERING SLEEVE HOLE



CRICKET EQUIPMENT

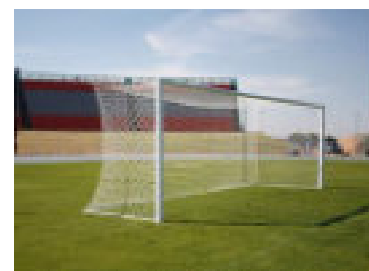
ITEM CODE	ITEM	PRICE	DESCRIPTION
SE - CRI 001	STANDARD MILD STEEL CRICKET WICKETS	R830,00	STANDARD DIMENSIONS. 2MM MILD STEEL, HOT DIP GALVANIZED, PAINTED IN A COLOUR OF YOUR CHOICE.
SE - CRI 002	MOBILE CRICKET NET	R45 000,00	11M LONG X 3,7M WIDE X 3M HIGH; CONSTRUCTED WITH 34MM X 2MM MILD STEEL, HOT DIP GALVANIZED, COMPLETE WITH SOFT NETTING AND 8 PNEUMATIC WHEELS
SE - CRI 003	MOBILE CRICKET NET - ALUMINIUM	R75 000,00	11M LONG X 3,7M WIDE X 3M HIGH; CONSTRUCTED WITH 34MM X 2MM MILD STEEL, HOT DIP GALVANIZED, COMPLETE WITH SOFT NETTING AND 8 PNEUMATIC WHEELS
SE - CRI 004	MOBILE CRICKET SIGHT SCREEN	R18 000,00	8M WIDE X 4M HIGH; CONSTRUCTED WITH 2MM THICK MILD STEEL, HOT DIP GALVANIZED, COMPLETE WITH WHITE SHADECLOTH AND 4 PNEUMATIC WHEELS



FOOTBALL EQUIPMENT

FOOTBALL EQUIPMENT

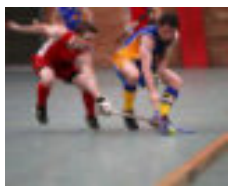
ITEM CODE	ITEM	PRICE	DESCRIPTION
SE - SOC 001	FIFA COMPETITION SPEC FULL SIZE (PER SET)	R40 292,00	FIFA DIMENSIONS, 3MM MILD STEEL, HOT DIP GALVANIZED, STANDARD WHITE PAINT WITH DIFFERENT COLOUR OPTIONS AVAILABLE. TO BE SET IN CONCRETE FOOTING. NET INCLUDED
SE - SOC 002	FIFA DIMENSION STANDARD SELF STANDING - FULL SIZE - PER SET	R42 292,00	FREE STANDING UNIT; FIFA DIMENSIONS, 2MM TO 4MM MILD STEEL, HOT DIP GALVANIZED, STANDARD WHITE PAINT WITH DIFFERENT COLOUR OPTIONS AVAILBE..NET INCLUDED
SE - SOC 003	FIFA DIMENSION BASIC FIXED GOAL - FULL SIZE - PER SET	R25 955,00	FIFA DIMENSIONS, 2MM TO 4MM MILD STEEL, HOT DIP GALVANIZED, STANDARD WHITE PAINT WITH DIFFERENT COLOUR OPTIONS AVAILBE. NO BACK NET SUPPORT. TO BE SET IN CONCRETE FOOTING. NET INCLUDED
SE - SOC 004	MID SIZE FOOTBALL GOALS SELF STANDING (PER SET)	R25 757,00	3M X 2M X 1M, 2MM MILD STEEL, HOT DIP GALVANIZED, STANDARD WHITE PAINT WITH DIFFERENT COLOUR OPTIONS AVAILABLE. NET INCLUDED.
SE - SOC 005	BACK YARD GOAL - EACH	R2 450,00	1,3M X 0,9M X 0,7M, 2MM MILD STEEL, HOT DIP GALVANIZED, STANDARD WHITE PAINT WITH DIFFERENT COLOUR OPTIONS AVAILABLE. NET INCLUDED.
SE - SOC 006	CORNER FLAG POSTS - FREE STANDING - PER SET OF 4 UNITS	R3 100,00	STANDARD CORNER POSTS COMPLETE WITH 1,5MM MILD STEEL, HOT DIP GALVANIZED, STANDARD WHITE PAINT. 40MM PVC POSTS, SPRING LOADED INCLUDES STEEL SLEEVES AND STEEL CAPS. (SET OF 4 OR 6)
SE - SOC 007	CORNER FLAGS FIXED USING SLEEVE SYSTEM - PER SET OF 4 UNITS	R3 100,00	40MM WHITE PVC PIPE WITH CANVASE FLAG. TO BE INSTALLED INTO CONCRETE FOOTING. (SET OF 4 OR 6)



HOCKEY EQUIPMENT

HOCKEY EQUIPMENT

ITEM CODE	ITEM	PRICE	DESCRIPTION
SE - HOC 001	FIH SPEC HOCKEY GOALS - MILD STEEL -STANDARD BACKBOARDS (PER SET)	R33 780,00	FIH STANDARD DIMENSIONS, 2MM TO 4MM MILD STEEL, HOT DIP GALVANIZED, STANDARD WHITE PAINT WITH DIFFERENT COLOUR OPTIONS AVAILABLE. SYNSPORT NOISE DEADENING REBOUND BOARDS WITH CLOSED CELL HD FOAM COMPLETE WITH SYNTHETIC GRASS , SOLID WHEELS AND NET INCLUDED
SE - HOC 002	FIH SPEC HOCKEY GOALS - ALUMINIUM -STANDARD BACKBOARDS (PER SET)	R65 000,00	FIH STANDARD DIMENSIONS, ENGINEERED ALUMINIUM DESIGN, STANDARD WHITE PAINT WITH DIFFERENT COLOUR OPTIONS AVAILBE. SYNSPORT NOISE DEADENING REBOUND BOARDS WITH CLOSED CELL HD FOAM COMPLETE WITH SYNTHETIC GRASS SOLID WHEELS AND NET INCLUDED
SE - HOC 003	SYNSPORT FOLD UP GOALS - MILD STEEL - STANDARD BACKBOARDS (PER SET)	R14 900,00	FIH STANDARD DIMENSIONS (TOPLESS), 2MM TO 4MM MILD STEEL, HOT DIP GALVANIZED, STANDARD WHITE PAINT WITH DIFFERENT COLOUR OPTIONS AVAILABLE. SYNSPORT NOISE DEADENING REBOUND BOARDS WITH CLOSED CELL HD FOAM COMPLETE WITH SYNTHETIC GRASS , SOLID WHEELS AND NET INCLUDED
SE - HOC 004	CORNER FLAG POSTS - FREE STANDING - PER SET OF 4 UNITS	R3 100,00	STANDARD CORNER POSTS COMPLETE WITH 40MM PVC PIPE ,STANDARD WHITE PAINTED WITH DIFFERENT COLOUR OPTIONS AVAILABLE.
SE - HOC 005	INDOOR HOCKEY TIMBER BARRIER	R54 332,00	88 LINEAR METERS OF 4,0M X 0,1M X 0,1M TREATED PINE TIMBER BEAMS COMPLETE WITH STEEL FIXING PLATE AND BOLTS. ONE SIDE IS BEVELLED.
SE - HOC 006	FIH INDOOR SPEC HOCKEY GOALS- MILD STEEL -STANDARD BACKBOARDS (PER SET)	R33 780,00	FIH STANDARD DIMENSIONS, 2MM TO 4MM MILD STEEL, HOT DIP GALVANIZED, STANDARD WHITE PAINT WITH DIFFERENT COLOUR OPTIONS AVAILABLE. SYNSPORT NOISE DEADENING REBOUND BOARDS WITH CLOSED CELL HD FOAM COMPLETE WITH SYNTHETIC GRASS , SOLID WHEELS AND NET INCLUDED
SE - HOC 007	FIH INDOOR SPEC HOCKEY GOALS- ALUMINIUM -STANDARD BACKBOARDS (PER SET)	R65 000,00	FIH STANDARD DIMENSIONS, ENGINEERED ALUMINIUM DESIGN, STANDARD WHITE PAINT WITH DIFFERENT COLOUR OPTIONS AVAILBLE. SYNSPORT NOISE DEADENING REBOUND BOARDS WITH CLOSED CELL HD FOAM COMPLETE WITH SYNTHETIC GRASS , SOLID WHEELS AND NET INCLUDED
SE - HOC 008	HOCKEY BARRIERS FOR 5'S HOCKEY & PRACTICE SESSIONS - HIGH DENSITY FOAM	R112 000,00	MADE UP OF 76 UNITS OF 2.0M LONG AND 250MM IN HEIGHT. BRANDING OPPORTUNITIES ON 2 SIDES AND A MULTITUDE OF COLOURS TO CHOOSE FROM. PRICE IS SUPPLY ONLY AND EXCLUDES DELIVERY.



NETBALL & TENNIS EQUIPMENT

NETBALL EQUIPMENT

ITEM CODE	ITEM	PRICE	DESCRIPTION
SE - NET 001	NETBALL POST STANDARD - SLEEVE (EACH)	R2 850,00	INF STANDARD DIMENSIONS FIXED POSTS IN SLEEVES. SET SLEEVE IN CONCRETE , 2,5MM MILD STEEL, HOT DIP GALVANIZED, STANDARD GREEN PAINT. SOLID RING WITH NET INCLUDED. AVAILABLE IN JUNIOR SIZE.
SE - NET 002	NETBALL POSTS DOUBLE HEIGHT (SLEEVED - EACH)	R3 350,00	INF STANDARD DIMENSIONS FIXED POSTS IN SLEEVES. SET SLEEVE IN CONCRETE , 2,5MM MILD STEEL, HOT DIP GALVANIZED, STANDARD WHITE PAINT WITH STANDARD GREEN PAINT. SOLID RING WITH NET INCLUDED. COMES WITH 2 X HOOPS TO ACCOMMODATE JUNIOR & SENIOR PLAYERS
SE - NET 003	NETBALL POST STANDARD - FREE STANDING (EACH)	R3 500,00	INF STANDARD DIMENSIONS WITH SELF STANDING SUPPORT FOR COUNTER WEIGHT, 2,5MM MILD STEEL, HOT DIP GALVANIZED, STANDARD WHITE PAINT WITH DIFFERENT COLOUR OPTIONS AVAILABLE. SOLID RING WITH NET INCLUDED. AVAILABLE IN JUNIOR SIZE
SE - NET 004	NETBALL POST PROTECTOR - PER SET OF 2 UNITS	R2 950,00	NETBALL POST PROTECTOR - 2,0M HIGH BY 150MM WIDE. INCLUDES BRANDING ON 2 X SIDES



TENNIS EQUIPMENT

ITEM CODE	ITEM	PRICE	DESCRIPTION
SE - TEN 001	STANDARD TENNIS POST SET - COMMUNITY	R5 550,00	ITF DIMENSIONS, 2MM X 76MM ROUND TUBE, HOT DIP GALVANIZED, STANDARD GREEN PAINT WITH DIFFERENT COLOUR OPTIONS AVAILABLE. SLEEVES & CAPS INCLUDED FOR CONCRETING. STANDARD STEEL WINDERS AND FIXING LUGS. EXCLUDES NET.
SE - TEN 002	COMPETITION SET - SQUARE TUBE WITH BRASS WINDER	R8 500,00	ITF DIMENSIONS, 2MM X 76MM SQUARE TUBE IN SLEEVES & CAPS FOR CONCRETING. HOT DIP GALVANIZED, STANDARD DARK GREEN PAINT WITH DIFFERENT COLOUR OPTIONS AVAILABLE. INTERNAL BRASS WINDER SYSTEM. SLEEVES & CAPS INCLUDED FOR CONCRETING. EXCLUDES NET.
SE - TEN 003	STANDARD NET ONLY	R1 350,00	ITF STANDARD NET
SE - TEN 004	COMPETITION NET	R2 250,00	ITF COMPETITION NET
SE - TEN 005	BASIC TENNIS UMPIRE CHAIR	R5 000,00	2,4 X 0,8 X 1,2M 3MM MILD STEEL, HOT DIP GALVANIZED, PAINTED. COMPLETE WITH PLASTIC CHAIR, UMBRELLA HOLDER & UMPIRE TABLE. ADJUSTABLE FEET FOR LEVEL, COMPLETE WITH ANTI SLIP LADDER.
SE - TEN 006	DELUXE TENNIS UMPIRE CHAIR	R17 000,00	PREMIUM-GRADE ALUMINIUM. SUITABLE FOR INDOOR AND OUTDOOR TENNIS COURTS. ITF REGULATION - CONFORMS WITH OFFICIAL ITF REGULATIONS, CAN BE USED FOR COMPETITIVE TENNIS MATCHES AT ALL LEVELS RIGHT UP TO THE PROFESSIONAL GAME. 7FT TALL. 100% WEATHER PROOF AND RUST RESISTANT. TRADITIONAL GREEN POWDER-COATED FINISH.
SE - TEN 007	FREESTANDING TENNIS POSTS WITH NET - DELUXE	R15 995,00	FREESTANDING TENNIS POSTS. 100% PORTABLE, THE RETRACTABLE WHEELS ALLOW FOR EASY 360° MOVEMENT. 100% PORTABLE, THESE TENNIS POSTS OFFER A TOURNAMENT-LEVEL PERFORMANCE AT EXCEPTIONAL VALUE, WHICH IS WHY THEY'RE THE PERFECT FIT FOR SCHOOLS, TENNIS CLUBS AND TOURNAMENTS.



RUGBY & VOLLEYBALL EQUIPMENT

RUGBY EQUIPMENT

ITEM CODE	ITEM	PRICE	DESCRIPTION
SE - RUG 001	WORLD RUGBY STADIUM SPEC POSTS	PRICE ON REQUEST	WORLD RUGBY DIMENSIONS, 2MM TO 4MM MILD STEEL, HOT DIP GALVANIZED, PAINTED IN A COLOUR OF YOUR CHOICE. COMPLETE WITH SYNSPORT HINGE SYSTEM FOR EASY TAKE DOWN AND REMOVAL. 14M TOTAL HEIGHT FOR STADIUM
SE - RUG 002	PREMIUM COMBO RUGBY/FOOTBALL POSTS (PER SET)	R60 000,00	FIFA/WORLD RUGBY DIMENSIONS, 2MM TO 4MM MILD STEEL, HOT DIP GALVANIZED, PAINTED IN A COLOUR OF YOUR CHOICE. COMPLETE WITH SYNSPORT HINGE SYSTEM FOR EASY TAKE DOWN AND REMOVAL. COMPLETE WITH FOOTBALL NET, EXCLUDES POST PROTECTORS. 9.54M IN HEIGHT (8,5M ABOVE GROUND)
SE - RUG 003	8M FIXED RUGBY POSTS (PER SET)	R45 000,00	WORLD RUGBY DIMENSION UP TO 8M TOTAL HEIGHT. 3MM MILD STEEL, HOT DIP GALVANIZED, PAINTED IN A COLOUR OF YOUR CHOICE. TO BE SET IN CONCRETE. EXCLUDE RUGBY POST PROTECTORS. 8M TOTAL HEIGHT
SE - RUG 004	RUGBY POLE PROTECTORS (PRICE PER SET OF 4 UNITS)	R7 000,00	1.5M TALL HIGH DENSITY FOAM PADDING SYSTEM COVERED WITH UV STABILIZED PVC. CANVAS, PRINTING AND BRANDING OPTIONAL.
SE - RUG 005	HINGED RUGBY POSTS - PER SET	R60 000,00	WORLD RUGBY DIMENSION UP TO 8M TOTAL HEIGHT. 3MM MILD STEEL, HOT DIP GALVANIZED, PAINTED IN A COLOUR OF YOUR CHOICE. HINGED SYSTEM. EXCLUDE RUGBY POST PROTECTORS. 8M TOTAL HEIGHT



VOLLEYBALL EQUIPMENT

ITEM CODE	ITEM	PRICE	DESCRIPTION
SE - VOL 001	SLEEVED VOLLEYBALL POSTS	R7 250,00	FIVB DIMENSIONS, 2MM STEEL, HOT DIP GALVANIZED, STANDARD WHITE WITH DIFFERENT COLOUR OPTIONS AVAILABLE. SLEEVED UNIT WITH BOLT FIXINGS. COMPLETE WITH NET, EXCLUDES POST PROTECTORS
SE - VOL 002	FREE-STANDING VOLLEYBALL POSTS	R9 500,00	FIVB DIMENSIONS, 2MM STEEL, HOT DIP GALVANIZED, STANDARD WHITE WITH DIFFERENT COLOUR OPTIONS AVAILABLE. SELF STANDING UNIT WITH BOLT FIXINGS. COMPLETE WITH NET, EXCLUDES POST PROTECTORS.
SE - VOL 003	VOLLEYBALL UMPIRE CHAIR	R5 000,00	2M X 0,8M X 0,6M 3MM MILD STEEL, HOT DIP GALVANIZED, PAINTED. COMPLETE WITH PLASTIC CHAIR, UMBRELLA HOLDER & UMPIRE TABLE. ADJUSTABLE FEET FOR LEVEL, COMPLETE WITH ANTI SLIP LADDER.

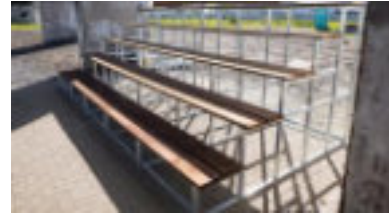


SPECTATOR SEATING & GENERAL EQUIPMENT

SPECTATOR SEATING

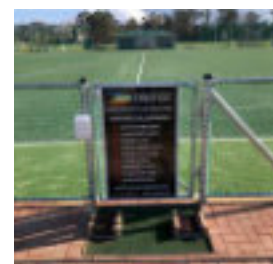
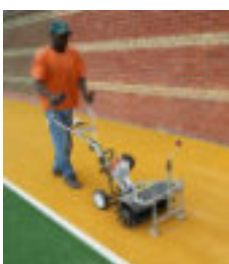
ITEM CODE	ITEM	PRICE	DESCRIPTION
SE - SEA 001	HEAVY DUTY ENGINEERED FOR HIGH WIND - WITH SIDE HAND RAIL	R51 000,00	SYNSPORT ENGINEERED DESIGN FOR HIGH WIND AND SAFETY REQUIREMENTS. HOT DIP GALVANIZED FRAME WITH TREATED PINE FINISH. + R 8500 FOR RECYCLED WOOD
SE - SEA 002	5M X 5 TIER STANDARD SCHOOL	R35 000,00	2MM X 50MM SQUARE TUBING, HOT DIP GALVANIZED PAINTED STANDARD GREEN WITH COLOUR OPTIONS AVAILABLE. TREATED PINE SEATING
SE - SEA 003	3M X 5 TIER STANDARD SCHOOL	R25 500,00	2MM X 50MM SQUARE TUBING, HOT DIP GALVANIZED PAINTED STANDARD GREEN WITH COLOUR OPTIONS AVAILABLE. TREATED PINE SEATING

NOTE: COMPOSITE PLASTIC SEATING FOR SPECTATOR STANDS ON PRICE REQUEST



GENERAL EQUIPMENT

ITEM CODE	ITEM	PRICE	DESCRIPTION
SE - GEN 001	BOOT CLEANERS	R3 595,00	SYNSPORT DESIGN USING 2MM TO 3MM MILD STEEL. HOT DIP GALVANIZED WITH STEEL ANCHOR UNIT FOR SETTING IN CONCRETE. COMPLETE WITH REPLACEABLE BRUSHES AND ASTRO TURF MAT INLAY. SIZE TBC
SE - GEN 002	CORNER FLAG POSTS - FREE STANDING PER SET OF 4 UNITS	R3 100,00	STANDARD CORNER POSTS COMPLETE WITH 1,5MM MILD STEEL, HOT DIP GALVANIZED, STANDARD WHITE PAINT WITH DIFFERENT COLOUR OPTIONS AVAILABE.
SE - GEN 003	ROTARY BRUSH WITH SLED ATTACHMENT	R16 500,00	STIHL ROTARY BRUSH WITH SLED ATTACHMENT FOR MAINTENANCE OF SYNTHETIC 3G AND HOCKEY FIELDS.
SE - GEN 004	RIDE ON TRACTOR WITH ALLIMINIUM DRAG BRUSH	R75 000,00	STIHL ROTARY BRUSH WITH SLED ATTACHMENT FOR MAINTENANCE OF SYNTHETIC 3G AND HOCKEY FIELDS.
SE - GEN 005	DRAG BRUSH ONLY	R17 000,00	ALIMINIUM DRAG FOR MAINTENANCE OF 3G AND HOCKEY FIELDS



TERMS AND CONDITIONS

- QUOTED PRICES ON THE CATALOGUE ARE EXCLUDING VAT AND EXCLUDES DELIVERY*
- DELIVERY WILL BE CALCULATED AT QUOTE STAGE AND A FORMAL QUOTE WILL BE SUBMITTED FOR SIGN OFF*
- GOODS REMAIN THE PROPERTY OF SYNSPORT UNTIL PAID IN FULL*
- PRODUCTION/ SUPPLY WILL ONLY BE EFFECTED ON RECEIPT OF PAYMENT*
- DELIVERY DATE WILL BE CONFIRMED ON THE RECEIPT OF PAYMENT*
- PAYMENT TERMS: FULL PAYMENT IN ADVANCE*
- THE CLIENT IS LIABLE FOR THE FULL AMOUNT ON THE QUOTATION ONCE THE ACCEPTANCE IS SIGNED*
- ALL IMPORTED ITEMS ARE SUBJECT TO CURRENCY FLUCTUATION - PRICES ARE VALID FOR 30 DAYS UNLESS EXTENDED IN WRITING*
- PRICING VALID UNTIL 30 MARCH 2022*

CONTACT DETAILS

- CONTACT NUMBER: 072 228 3884*
- EMAIL: SALES@SYNSPORT.CO.ZA*
- WEBSITE: WWW.SYNSPORT.CO.ZA*

WHEN EMAILING YOUR ORDERS PLEASE:

- SPECIFY YOUR NAME & SURNAME*
- YOUR CONTACT DETAILS*
- YOUR INSTITUTION NAME & PHYSICAL ADDRESS*
- SPECIFY THE PRODUCT CODE, DESCRIPTION AND QUANTITY OF ITEMS YOU REQUIRE*